

ÖZLEM[®]

FABRIC

POULE



Task Seating



Soft Seating



Panels



Environmental



Cigarette & Match

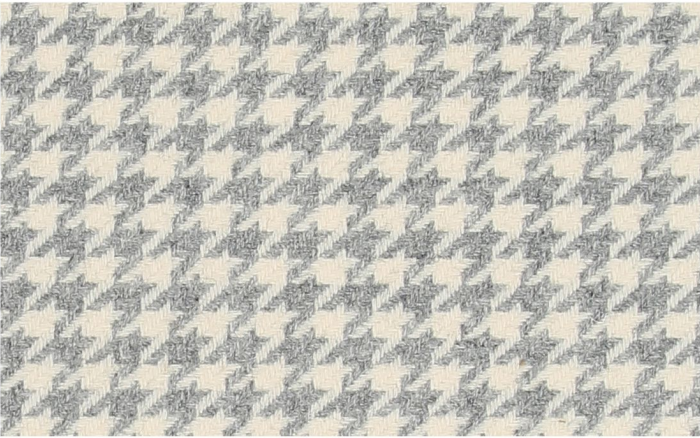


Acoustic



Curtains

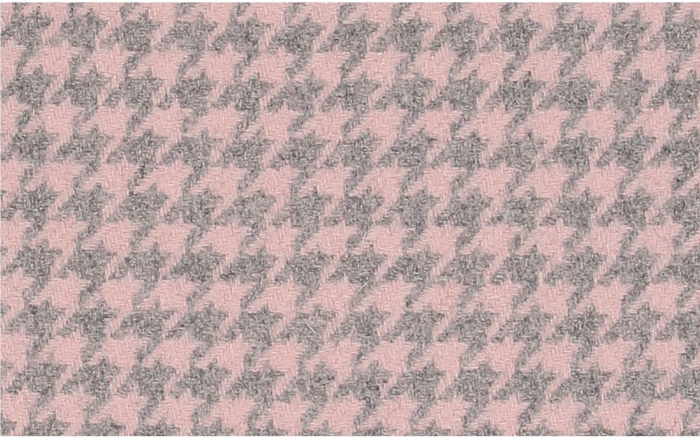
POULE



NATURAL
127058



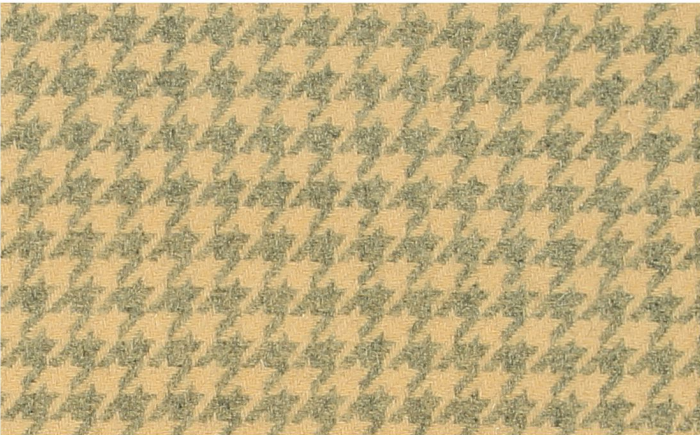
BISCUIT
118893



PINKY
118884



SAGE
118892



BUTTER
118894



SALMON
119035



TWILIGHT
118888

EN	TR	FR	ES
Composition %80 Wool %20 Polyamide Non Metallic Dyestuffs	Karışım %80 Yün %20 Poliamid Zararlı Metal Bulundurmayan Boyalar Kullanılmıştır	Composition %80 Laine %20 Polyamid Teintures non métalliques	Composición %80 Lana %20 Polyamid Tintes no metálicos
Width 140 cm	En 140 cm	Largeur 140 cm	Ancho 140 cm
Weight 430g/m2 ± 5% (600g/lin.m ±5%)	Ağırlık 430g/m2 ± 5% (600g/lin.m ±5%)	Poids 430g/m2 ± 5% (600g/m.l ±5%)	Peso 430g/m2 ± 5% (600g/lin.m ±5%)
Abrasion Resistance 50.000 Martindale cycles (ISO 12947-2:1998)	Abrasyon 50.000 Martindale cycles (ISO 12947-2:1998)	Résistance á l'abrasion 50.000 Martindale tours (ISO 12947-2:1998)	Resistencia a la abrasión 50.000 Martindale ciclos (ISO 12947-2:1998)
Pilling 4/5 (ISO 12945-2:2000)	Pilling 4/5 (ISO 12945-2:2000)	Boulochage 4/5 (ISO 12945-2:2000)	Pilling 4/5 (ISO 12945-2:2000)
Color Fastness to Rubbing Dry: 4 (BS EN ISO 105 X12:2002) Wet: 4 (BS EN ISO 105 X12:2002)	Sürtme Renk Haslıđı Kuru: 4 (BS EN ISO 105 X12:2002) Yaş: 4 (BS EN ISO 105 X12:2002)	Solidité des couleurs au frottement Sec: 4 (BS EN ISO 105 X12:2002) Mouillé: 4 (BS EN ISO 105 X12:2002)	Solidez del color al rozamiento Seco: 4 (BS EN ISO 105 X12:2002) Húmedo: 4 (BS EN ISO 105 X12:2002)
Light Fastness 5 (BS EN ISO 105 B02:2014)	Işık Haslıđı 5 (BS EN ISO 105 B02:2014)	Solidité à la lumière 5 (BS EN ISO 105 B02:2014)	Solidez a la luz 5 (BS EN ISO 105 B02:2014)
Flammability BS EN 1021 -1:2014 Cigarette BS EN 1021 -2:2014 Match	Yanmazlık BS EN 1021 -1:2014 Sigara BS EN 1021 -2:2014 Kibrit	Flammabilité BS EN 1021 -1:2014 Cigarette BS EN 1021 -2:2014 Allumette	Inflamabilidad BS EN 1021 -1:2014 Cigarillo BS EN 1021 -2:2014 Cerilla
Cleaning Vacuum regularly. Professionally dry clean or wipe clean with a damp cloth	Temizleme Profesyonel kuru temizleme yapınız. Islak temiz bez ile silinebilir.	Nettoyage Aspirez régulièrement. Nettoyage à sec professionnel. Autrement, essuyer avec un tissu humide.	Limpieza Limpiar con aspirador con regularidad. Limpiar en seco, o bien lavar con un paño húmedo
Notes Shade variations may occur batch to batch within commercial tolerances.	Not Üretimler arasında kabul edilebilir seviyede renk ton farkları oluşabilir.	Remarque Une Variation de couleurs peut provenir Commercialement tolérable	Nota Las variaciones de lote a lote en la sombra se puede producir dentro de tolerancias comerciales.

ÖZLEM®

FABRIC



ÖZLEM.FABRIC

Özlem Kumaş San. Tic. Ltd. Şti.
Tekstilkent Koza Plaza B Blok
Kat:31 Esenler 34235
İSTANBUL / TURKEY

T : +90 212 438 5 438
E : fabric@ozlemkumas.com
W : www.ozlemkumas.com